

i-Kam Xtreme™

video revolution eyewear evolution



50000



50001



50002



50003

USER MANUAL



ACCESSORIES



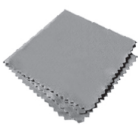
VIDEO RECORDER EYEWEAR



CARRY CASE



USER INSTRUCTIONS



CLEANING CLOTH



AC ADAPTER



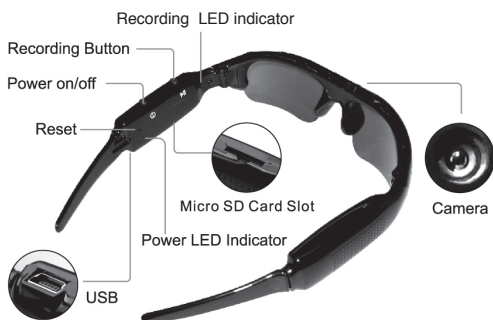
USB CABLE



4 INTERCHANGEABLE LENSES

•CLEAR •POLARIZED BROWN •POLARIZED AMBER •POLARIZED BLACK

PARTS INTRODUCTION



TROUBLE SHOOTING

Symptom	Possible reason	Solution
Fails to start unresponsive/locked	Flat battery	Recharge battery
	device jam	Depress Reset Button (above power light) with paper clip then start again
Auto shut-off	Flat battery	Recharge battery
	Connect to pc when power off	Connect to pc when device on
	USB Cable failure	Replace new cable
	PC Bios disabled	Set USB enabled
	Main board does not support USB port	Update mainboard driver
Cannot recognize when connected to PC/MAC/Laptop	PC system Jam	Reboot PC
	Memory is full	Delete unwanted files
Data not saving	Memory is full	Delete unwanted files
Power auto off after start	Battery power shortage	Recharge
	Memory is full	Delete unwanted files

SPECIFICATIONS

Product Size	170 x 160 x 40mm (folded)
Physical weight	1.4 oz
Speed	Read > 700kbs, write > 500kbs
USB	2. 0 (HS)
Power supply	Embedded 550mAh Li-polymer Battery
Power duration	2. 5~3 hours Full Charge
Power Adaptor	5V DC/ 500mAh
Power Ratio	<0. 8W
Memory	Built in 4GB,Max 8GB,Support max 8GB Micro SD card.
Resolution	736 x 480
Video Format	AVI
Audio	Stereo
Camera	3 mega pixels pinhole CMOS camera
Recording Speed	25 fps
Working temp	23° F-104° F
Storage temp	-4° F-176° F
Player	Windows Media Player, Quicktime, Real player, Storm codec
Menu Language	English
Operating System:	Win98, WinMe, WinXP, Win2000 Windows Vista, Windows 7, Mac OS 10.6 or higher

FCC STATEMENT

This device complies with Part 15 of the FCC rules. Operation is subject to the following two conditions:

- (1) This device may not cause harmful interference, and
- (2) This device must accept any interference received, including interference that may cause undesired operation.

Note:

This equipment has been tested and found to comply with the limits for Class B digital devices, pursuant to Part 15 of the FCC rules. These limits are intended to provide reasonable protection against harmful interference in a residential installation. This equipment generates, uses and can radiate radio frequency energy and, if installed and used in accordance with the instructions, may cause harmful interference to radio communications. However, there is no guarantee that interference will not occur in a particular installation. If this equipment does cause harmful interference to radio or television reception, which can be determined by turning the equipment off and on, the user is encouraged to try to correct the interference by one or more of the following measures:

- (1) reorient or relocate the receiving antenna,
- (2) connect the equipment into an outlet on a circuit different from that to which the receiver is connected,
- (3) consult the dealer or an experienced radio/TV technician for help.

Use of shielded cable is required to comply with Class B limits in Subpart B of Part 15 of the FCC rules. Do not make any changes or modifications to the equipment unless otherwise specified in the manual. If such changes or modifications should be made, you could be required to stop operation of the equipment.

Canadian Doc Notice:

For Class B Computing Devices

This digital apparatus does not exceed the Class B limits for radio noise emissions from digital apparatus as set out in the Radio Interference Regulation of the Canadian Department of Communications.

FEATURES

1. 4 sets of quality interchangeable lenses: polarized brown, polarized amber, polarized black and clear.
2. 3 mega pixels pin hole CMOS camera for clear digital video recording.
3. Built-in 4 GB, Max 8 GB memory for approximately 3 hours of video recording.
4. Memory slot can support max 8 GB Micro SD card.
5. Easy USB connection with PC/Laptop/MAC; no driver needed.
6. User-friendly 2 button operation for easy control.
7. Real recording time display.

LENSES

REMOVING/REPLACING LENSES

To REMOVE a lens from eyewear, hold the lens you wish to remove in one hand and support the eyewear frame with your other hand. Pull downward on the lens, away from the top of the frame, while at the same time, supporting the frame with your other hand. The lens will slide downward and out of the frame.

To REPLACE a lens into eyewear, hold the lens you wish to replace in one hand and support the eyewear frame with your other hand. Slide the lens into the lens channel in the frame and push the lens upward until it rests into place. Make sure that the lens is securely seated into the frame.

ORDERING PRESCRIPTION LENSES

Please visit www.ikamoptics.com or Call 1-877-393-IKAM for further details on specifications, pricing and process.

COMPLIANCE WITH APPLICABLE LAW FOR USE OF PRODUCT

By purchasing i-Kam Xtreme or any other products offered by H.S. Industries, the buyer represents that the products purchased will be used only in a lawful manner. Consult an attorney or law enforcement professional regarding local, state and federal laws.

NOTICE:

All products sold by or through H.S. Industries may not be used to violate the privacy rights of others, or to access or intercept electronic communications in violation of wiretap statutes. In no way shall H.S. Industries or its subsidiaries or partner be held responsible for inappropriate use of its products.

IT IS THE SOLE RESPONSIBILITY OF THE BUYER TO CONSULT LEGAL COUNSEL FOR THE INTERPRETATION OF ANY LAWS APPLICABLE TO THE AREA OF INTENDED USE OF THESE PRODUCTS.

WARNING: i-Kam Xtreme glasses contain impact resistant lenses; they are NOT safety glasses. Although the lenses are impact resistant, it does not make the lenses shatterproof. Impact resistant lenses may break or shatter under certain conditions.

BATTERY

- A) If device fails to start, in most cases the battery is flat and needs to be recharged. For initial three charges it is recommended that you charge the battery for at least 8-12 hours for peak performance. Please DO NOT CHARGE FOR OVER 12 HOURS.
- B) You can either charge the battery using USB cable or charge it through AC adaptor provided. Usually a full charge requires 3-4 hours.
- C) Please do not use other AC adaptors other than the one provided in the standard kit to avoid damage to the product.
- D) If you haven't used the device for a long period of time, we recommend you recharge the battery first before use.
- E) For better product protection and faster recharge, charge the battery in power-off mode.
- F) AC Adaptor Lights: red only=charging; red and/or green=fully charged.
- G) Eyewear Frame Lights:
 - green & blue=power on (blue off after 8 seconds)
 - green only=power on and charged (after 30 seconds with no activity, device powers off)
 - solid green & blue blinking=recording
 - red light=charging
 - Note: if green & blue locked on for more than 30 seconds=device jam. Depress reset button located above green power light to unlock/reset eyewear.

Charging Recommendation: Charge battery when drained, or every three (3) months when not in use, to prolong battery life.

CAUTION

1. DO NOT record toward the sun as damage to the camera may result.
2. DO NOT expose device to rain or moisture as damage may result.
3. Avoid dropping the device as damage may result.
4. Please remove the protective film from both sides of your brown and amber polarized lenses before use. The black polarized lenses (in eyewear when purchased) and the clear lenses do not have a protective film on them.

MEMORY CAPACITY

- A) The eyewear has 4 GB built-in memory. The user can also use upto an 8 GB Micro SD card for more video storage.
- B) Micro SD card Recommendation: "Class 6"; e.g. @ or higher for faster recording speed.
- C) Please format Micro SD card before using.
- D) When memory space is full, LED light will stop blinking and start data saving.

PC/MAC CONNECTION

A) System Requirements:

- 1) CPU must be at least 1.6 Ghz or above
- 2) Operating system: Win98, WinMe, WinXP, Win2000 Windows Vista, Windows 7, Mac OS 10.6 or higher
- 3) USB slot
- 4) CD-Rom/DVD Rom
- 5) Minimum 1 GB free hard disk space
- 6) Minimum 512 MB memory

B) Connecting PC/Mac/Laptop:

- 1) Plug the USB cable to the eyewear and then connect the eyewear to your computer through the available USB port.
- 2) The computer will recognize the newly added "Disk X" and shall install the driver, if necessary. (See OPERATION)
- 3) After installation, a new window will pop up and give you several options. To see your video files, click on the Open Folder option. A video file will then appear. Double click on the video file to see your video clips. To play a video, double-click on the video that you would like to watch.
- 4) You can copy, move, or delete your video file(s) when your video file page is open. Select the video (single click on the video to highlight it) then choose what action you would like to take.
- 5) To clear storage space on your eyewear for future recording, you will need to delete the video files from the video file page. Please be sure to save the videos that you want to keep to your computer before deleting files from your eyewear.
- 6) When finished, close all related files and click "safely remove USB connection" following steps prescribed on screen.

For more information on i-Kam Xtreme™ products and accessories, please visit our website at www.hsindustries.com or call H.S. Industries at 1-800-530-7149.

OPERATION

A) Set Time: (Perform the following steps)

1. Connect your eyewear with the USB cable to your computer's USB port, then you can find a new added "Disk X" symbol in "my computer." "X" means disk name, like "DISK H" etc.
2. Move the mouse to "Disk X" symbol, double click "Disk X," right click, build a new Text document under the root directory of "Disk X." Make sure the Text document is built under "Disk X" not under "video folder."
3. Rename the new Text document to "setdate.txt."
4. Open the new Text document, input the local true time according to the following set form. For example: The present Eastern Standard Time is: 09:09:01, 9th, Sept, 2009, so we input like this: 20090909090901.
5. Save the set time in the Text document, after that, take a new recording. Connect with computer, check the time is correct or not. If not, please set time again.

B) Switch On: To start the device, short press the On/Off button once. You will see the green LED light blink once, and then it blinks once more together with the blue LED light. When blue LED light is off and the green LED light is on, device is then started and ready for recording.

C) Switch Off: One full press of the On/Off button will switch off the device. If needed, press and hold On/Off button

D) Auto Shut-Off: If you the leave the device without operation for 30 seconds, it will automatically shut off for power saving. You need to restart it again if you want to do new recording.

E) Recording:

- 1) Start to record: In power mode, one short press of the recording button will start recording. Blue LED light starts blinking to show that device is working properly. This can also be noticed by your peripheral vision when glasses are worn on nose.
Caution: DO NOT record towards the sun or it will damage the camera.
- 2) Stop and Save: During the recording, one short press of the recording button, the device will stop recording and start saving data to the memory. Blue LED will light on and go off within half a second. When blue light goes off, data saving is finished.